

CERTIFIED LAND CORNER RECORDATION

BOOK 1259 PAGE 1 27

DESCRIPTION OF CORNER EVIDENCE FOUND, AND ORIGINAL RECORD (If known)
Found no evidence of previous monumentation.

S.5 S.4
S.8 S.9
T.13N., R.64W.
6th P.M.

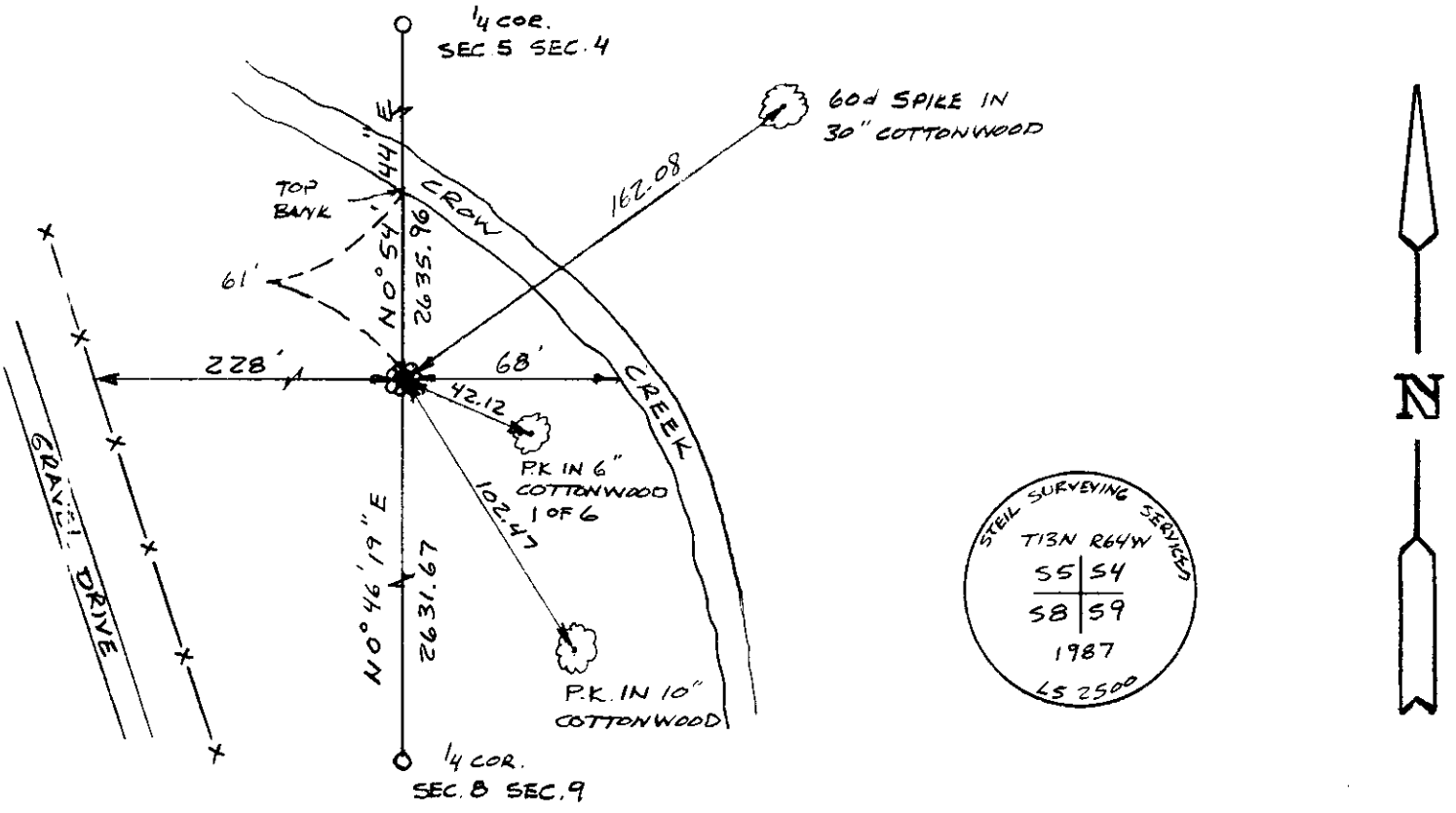
G.L.O. Record - Set a granite boulder 16" x 10" x 7" for corner - Edwin James & Alfred M. Rogers, Deputy Surveyors, 6 June, 1871.

DESCRIPTION OF MONUMENT AND ACCESSORIES ESTABLISHED TO PERPETUATE THE ORIGINAL LOCATION OF THIS CORNER:

At the corner: Set 2 1/2" x 30" aluminum pipe with 3" aluminum cap projecting 6" above ground with collar of stone 61' South and 68' West of bank of Crow Creek and stamped as shown below.

Accessories : See ties below

SKETCH, WITH COURSE AND DISTANCE TO ADJACENT CORNER IF DETERMINED IN THIS SURVEY. (May Sketch or Paste Reproduction on Reverse Side.)



I, John A. Steil certify that I have carefully performed or reviewed the work done on the diagrammed corner as reported on this recordation form and approve the same.

John A. Steil
Signature of Surveyor

L.S. 2500
Registration No.

STATE OF WYOMING,
Office of Clerk and Recorder,
County of Laramie

This "corner record" was filed for record on the 5th day of May, 1988, was noted on the cross-index plat and is assigned page No. 1974, in book No. 1259.

Janet C. Whitehead
County Official

Cross Index No.	<u>E-9</u>	T.	<u>13N</u>	R.	<u>64W</u>	Mer.	<u>6th</u>
		T.		R.		Mer.	
		T.		R.		Mer.	
		T.		R.		Mer.	
		T.		R.		Mer.	
		T.		R.		Mer.	